

DAEMON

Photoshop Action

by [Artorius](#)

Thank you for purchasing this item. Daemon is a Photoshop Action that will transform images by creating effects centered around the Subject of the image. Everytime you run the action an unique result will be produced, even if you don't change your brushed areas.

1. Load **Daemon PS Action by Artorius** into the Photoshop Action Panel. Follow [this](#) tutorial if you don't know how to install an action.

2. Load **Daemon Brushes** set into Photoshop. Follow [this](#) tutorial if you don't know how to load a brush set.

3. Open an image file or drop your image into a new document and flatten the image (Go to Layers - Flatten Image). The image layer should be a locked background (note the necessary **Background** layer). The recommended image size is around 2000-3000px on the long edge.

Note: a smaller image will produce larger effects while a large image will make the effects look small.

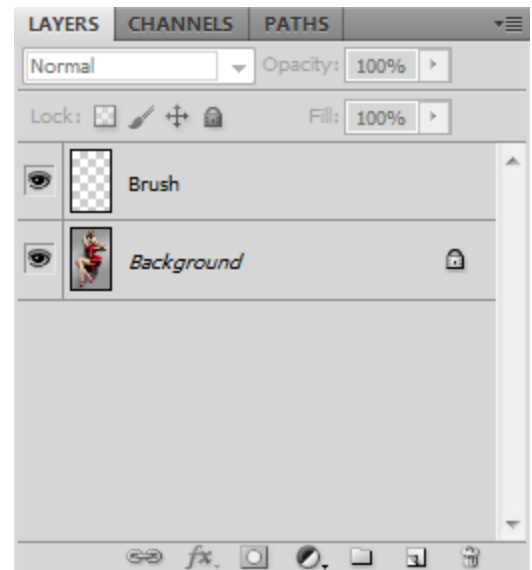
4. Create a new layer and name it **Brush** (*with capital B*). In this empty layer, use a white brush to paint the areas around your subject. Use a hard round brush (over 80% Hardness).

Recommendation: Before running the action, double the canvas size of the document so there is a large space around your subject for the effects to be visible. Do this by going to Image - Canvas size

5. Check to make sure your image mode is RGB 8bits (Image menu - Mode) and the Brush opacity is set to 100% (click on the Brush tool and Opacity should be at 100%).

6. Run your action by selecting **Daemon Action** and clicking Play in the Actions Panel.

You can run the action multiple times, it will generate multiple folder groups of the action with unique results.



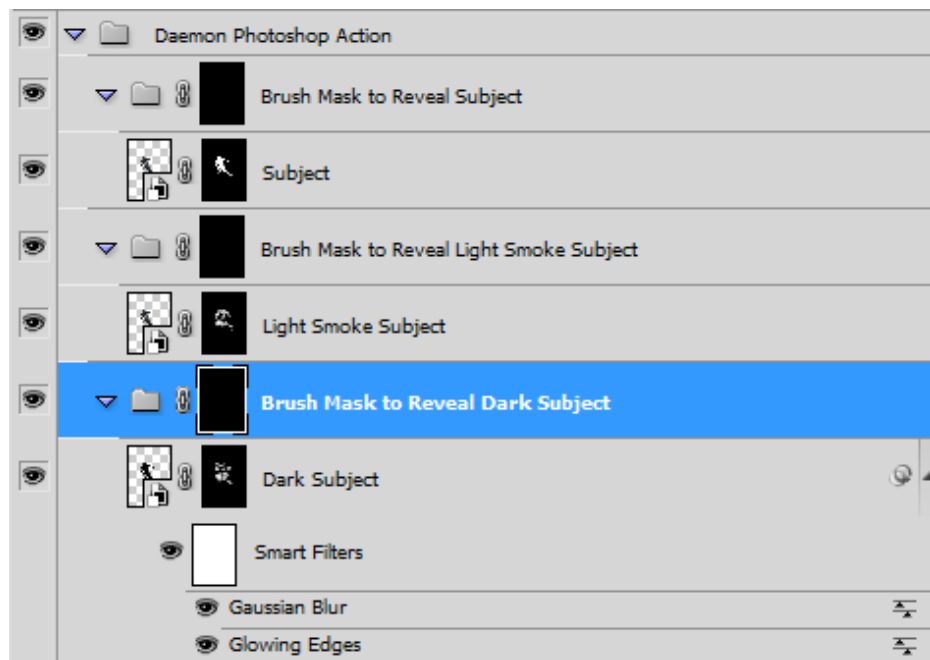
When you want, you can run the **Generate Color Presets** action to generate the color presets. This group containing the presets will be placed on top of all the layers (the Daemon action results).

CUSTOMIZING THE RESULTS:

Initially the Subject is not visible. The Daemon action generates a group called Daemon Photoshop Action (in the Layers panel). This group contains all the layers of the results.

The subject can be made visible by painting over 3 black masks: Brush Mask to Reveal Dark Subject, Brush Mask to Reveal Light Smoke Subject and Brush Mask to Reveal Subject.

These groups have a dark mask (totally black) adjacent to them:



The black mask hides contents of its group or layer. Everything white in the mask is visible.

Being black, everything inside these groups is totally hidden. **Select a black mask** by clicking on it. By default, when the action is complete, a special smoke brush is selected and the mask of **Brush Mask to Reveal Dark Subject** group is selected. You can paint directly over the canvas. The Subject will start to appear in the form of the dark smoke.

Painting on the **Brush Mask to Reveal Light Smoke Subject** will reveal parts of the subject made of smoke, but in the color of the subject.

Finally, painting on the **Brush Mask to Reveal Subject** will reveal the subject entirely on the area being painted upon

Note: These groups contain the subject layers which also have their own layer mask: Dark Subject, Light Smoke Subject. These layer masks are painted by the action with smoke in some areas. When you paint the black masks of the groups presented above, you basically reveal the smoke areas described here.

For advanced customizing and obtaining the perfect result you may use the actions' own default brushes (*called Daemon - USER brush to reveal*) and paint a random size and position smoke on the mask of a layer such as the Dark Subject layer **and** on the **Brush Mask to Reveal Dark Subject**. This will reveal the Dark Subject layer. In this way, you can have your Subject in the exact way you want, made from smoke.

The Dark Subject layer is a smart layer with a Gaussian blur filter applied. It can be edited to make the dark smoke which is part of the subject more diffuse and blurry.

Besides these layers, the action produces multiple layer and many have color options: you will see a **Color Fill** adjustment layer. This will allow setting a color for the element it affects.

There are 3 fire elements - located in the **Fire Variations** folder. By default, only Fire 3 is visible. There are 2 others hidden which can be set on for a different fire effect.

There are 2 background color effects. Background Color 2 is a color, but has a round gradient applied which darkens the edges and this gradient can be adjusted from the blending options.

Background Color 1 is a simple color.

When you are done with subject you can run the action **Generate Color Presets**. It will generate 12 color presets, each in its own group/folder that you can turn on (hidden) and all of them located in a main folder - COLOR OPTIONS. Also there are controls for saturation, brightness/contrast and color tint.

If you have more questions, feel free to contact me via my [GraphicRiver profile page](#).